

# Technical data

Pump name

100x80 FS4GA 5 2.2

Customer	Date 31-March-2020	Company
Contact	Item no.	Issued by
Phone	Project	Phone
E-mail	Project ID	E-mail

## Requested data

1	Pump type	End Suction Volute Pump	Fluid	Water, clean
2	Number of pumps / Reserve	1 / 0	Liquid temperature	°C 20
3	Flow	m <sup>3</sup> /h 0	Kin. viscosity	mm <sup>2</sup> /s 1
4	Head	m 0	Vapour pressure	bar 0.022
5	Geodetic head	m 0	PH value	7
6	Inlet pressure (pin)	bar 0.1	Density	kg/dm <sup>3</sup> 1
7	Available system NPSH	0	Solids	Weight % 0
8	Ambient temperature	°C 20		

## Pump

9	Pump name	100x80 FS4GA 5 2.2	Frequency	Hz 50
10	Design	End Suction Volute Pump	Installation type	with base, motor
11	Manufacturer	PTEI	Impeller Diameter	Max. mm 180
12	Speed	1/min 1450		Designed mm 180
13	No. of Stage	1		Min. mm 145
14	Connection Suction side	JIS 10K	Flow	Operating m <sup>3</sup> /h
15	Connection Discharge side	JIS 10K		Max- m <sup>3</sup> /h 84
16	Max Working Pressure	bar 10		Min- m <sup>3</sup> /h 24
17	Shut-off head	bar 1.03	Head	Operating m
18	Total weight	kg See the table of "Dimensions".		- (Qmax.) m 6.1
19	Shaft power	kW		- (Qmin.) m 10.3
20			Max. Shaft Power at max. impeller	kW 1.85
21	Required pump NPSH	m	Efficiency	%

## Materials

22	Casing	Cast iron	M.S.mating ring	Ceramic
23	Impeller	Bronze	M.S.seal ring	Carbon
24	Shaft	403 Stainless steel		
25	Casing ring	Bronze		
26	Ball bearing	.		
27	Mechanical seal	.		

## Motor

28	Manufacturer	TECO	Insulation class	F
29	Type	100L_B3_2.2_3_400	Phases	3~
30	Specific design	TEFC / 50 Hz / Pole pairs 2	Frame size	100 L
31	Rated power	kW 2.2	Weight	kg 32
32	Number of poles	4	Electric voltage	V 400
33	Speed	1/min 1425	Electric current	A 4.85
34	Degree of protection	IP 55		
35				

## Remarks

# Performance curve Pump name 100x80 FS4GA 5 2.2

Customer	Date 31-March-2020	Company
Contact	Item no.	Issued by
Phone	Project	Phone
E-mail	Project ID	E-mail

## Requested data

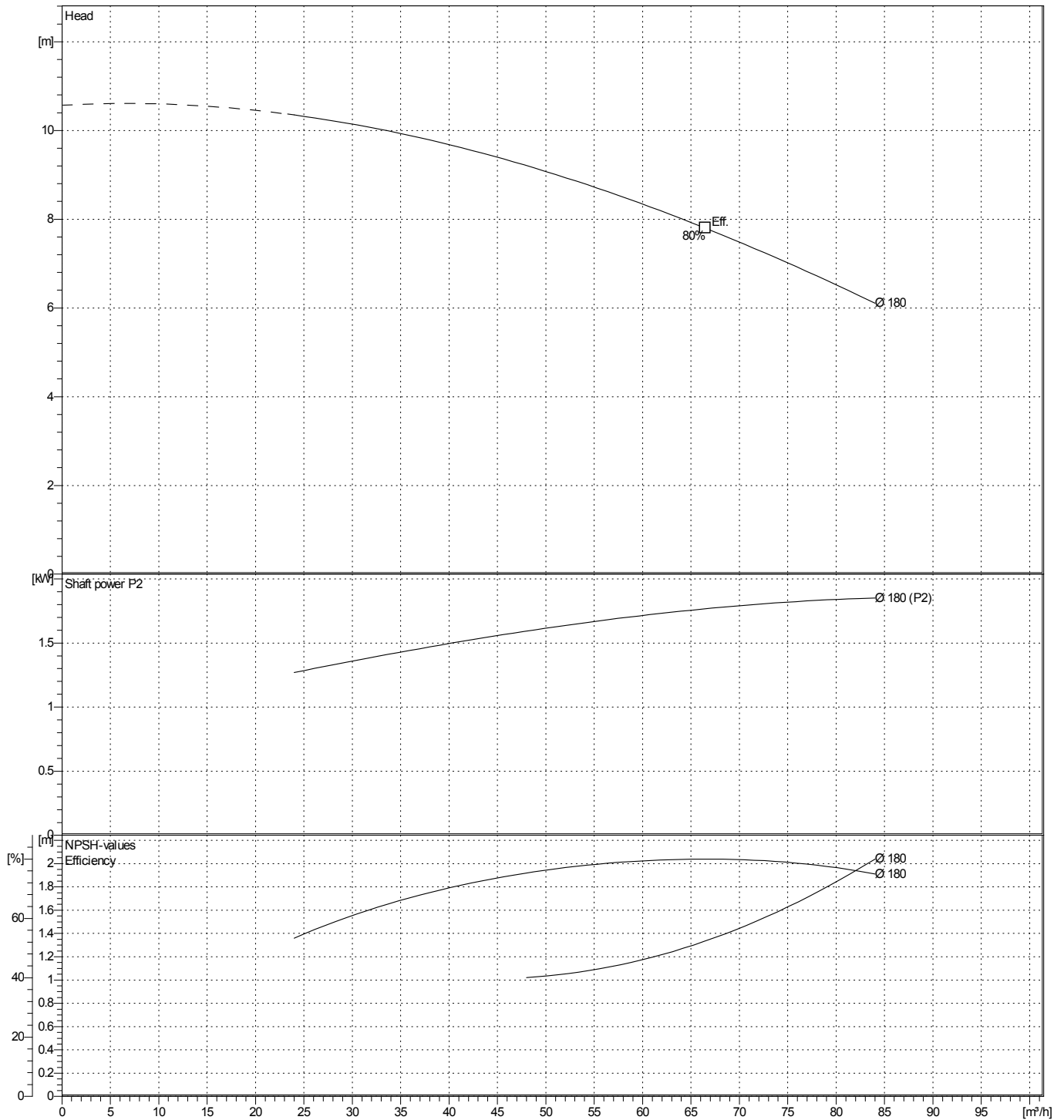
1	Flow	m <sup>3</sup> /h	0
2	Head	m	0
3	Geodetic head	m	0

## Pump

Operating Flow	m <sup>3</sup> /h	Frequency	Hz	50
Operating Head	m	Number of poles	4	
Impeller Diameter	Designed mm	180	Speed	1/min

Test standard: ISO 9906:2012 - Grade3B

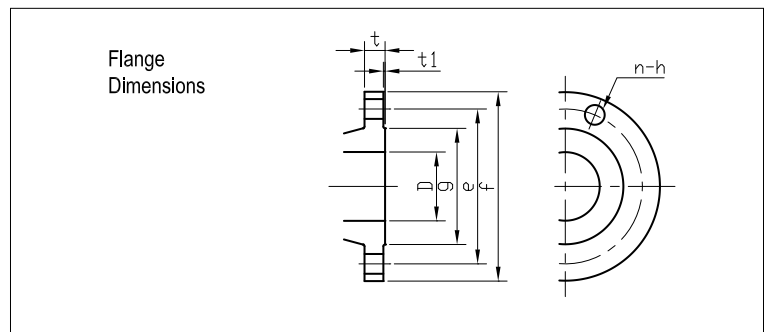
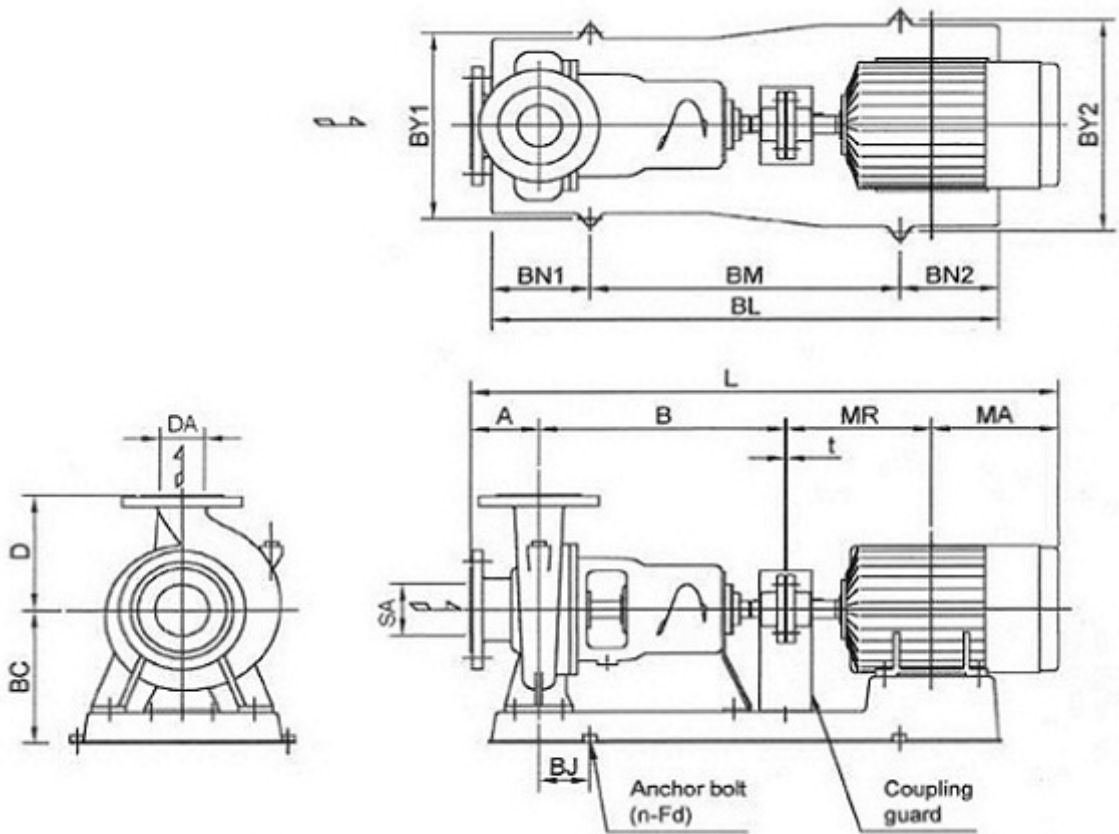
Water, clean [100%] ; 20°C; 0.9983kg/dm<sup>3</sup>; 1.005mm<sup>2</sup>/s



# Dimensions

Pump name 100x80 FS4GA 5 2.2

Customer	Date 31-March-2020	Company
Contact	Item no.	Issued by
Phone	Project	Phone
E-mail	Project ID	E-mail



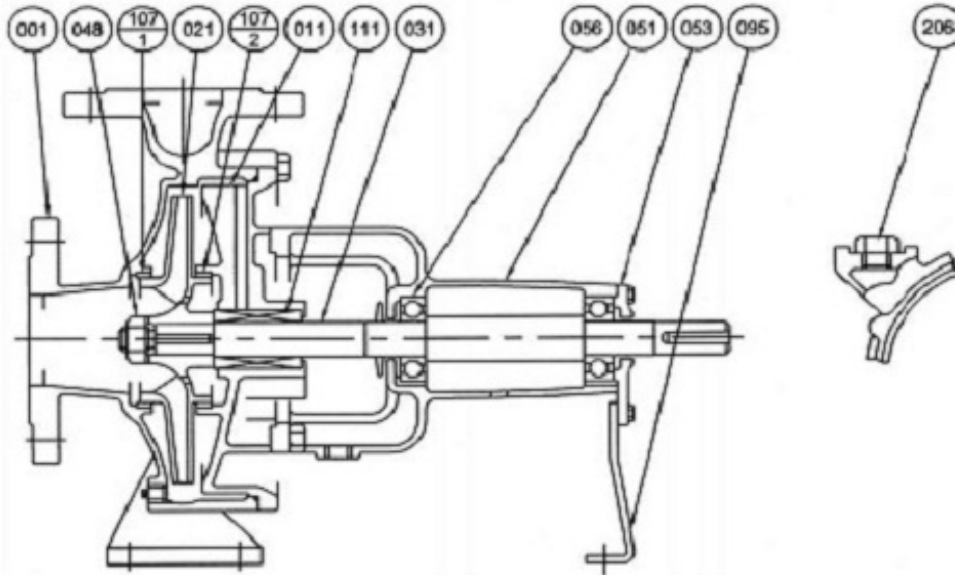
Total weight : 113 kg

Pump dimensions				Suction side		Discharge side	
				mm		mm	
A	100	L	837.5	D	100	D	80
B	360	MA	181.5	e	175	e	150
BC	220	MR	193	f	210	f	185
BJ	40	n	4 (Num)	g	151	g	126
BL	740	SA	100	h	19	h	19
BM	550	t	3	n Num	8	n Num	8
BN1	115			t	24	t	22
BN2	75			t1	2	t1	2
BY1	360						
BY2	290						
D	200						
DA	80						
Fd	M12						

# (1/2) Construction

Pump name 100x80 FS4GA 5 2.2

Customer	Date 31-March-2020	Company
Contact	Item no.	Issued by
Phone	Project	Phone
E-mail	Project ID	E-mail

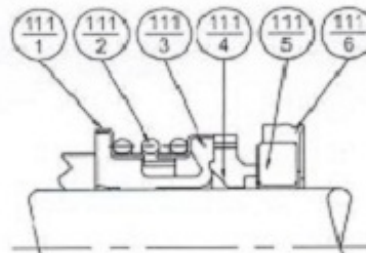
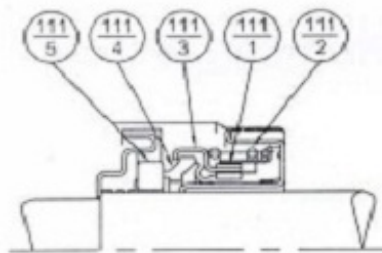


### Model FH

50x40 FSHA; 65x50 FSHA, FSJA;  
80x65 FSGA, FSHA, FSJA, FSKA;  
100x80 FSGA, FSHA, FSJA;  
125x100 FSKA

### Model EA

100x65 FSKA; 100x80 FSGCA, FSHCA;  
125x100 FSJCA, FSLA;  
150x100 FSKA, FSNA;  
150x125 FSHA, FSJA, FSKA, FSLA;  
200x150 FSHA, FSJA, FSKA, FSLA, FSNA;  
250x200 FSLA, FSNA



111-5	Mating Ring	Ceramic	1
111-4	Seal Ring	Carbon	
111-3	Friction Ring	NBR	
111-2	Coil Spring	Stainless Steel	
111-1	Spring Holder	Stainless Steel	
No.	Part Name	Material	Qty

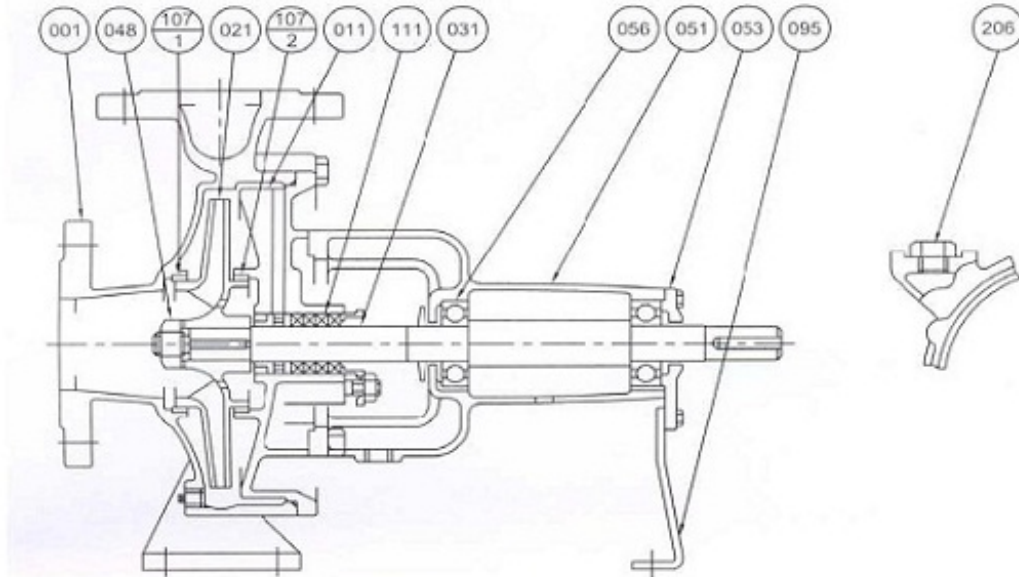
111-6	Cup Gasket	NBR	1
111-5	Mating Ring	Ceramic	
111-4	Seal Ring	Carbon	
111-3	Bellows	NBR	
111-2	Spring	Stainless Steel	
111-1	Spring Holder	Stainless Steel	
No.	Part Name	Material	Qty

207	Plug	Steel	1
111	Mechanical Seal	-	
107-2	Casing Ring	Bronze	
107-1	Casing Ring	Bronze	1
095	Stay	Steel	
056	Ball Bearing	-	2
053	Bearing Cover	Cast Iron	1
051	Bearing Housing		
048	Impeller Nut	Brass	1
031	Shaft	Stainless Steel	
021	Impeller	Bronze	
011	Casing Cover	Cast Iron	
001	Casing		
No.	Part Name	Material	Qty

# (2/2) Construction

Pump name 100x80 FS4GA 5 2.2

Customer	Date 31-March-2020	Company
Contact	Item no.	Issued by
Phone	Project	Phone
E-mail	Project ID	E-mail

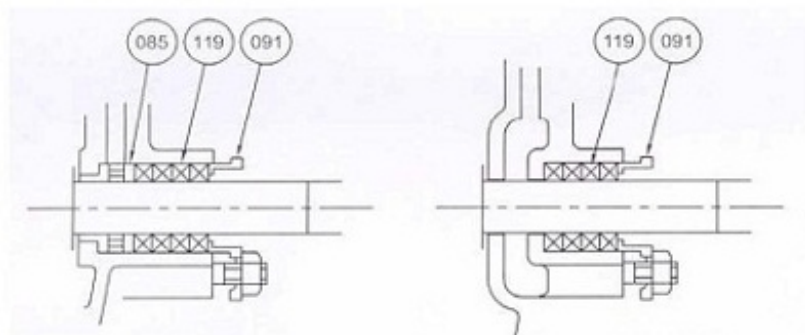


### With Lantern Ring

50x40 FSHA; 65x50 FSHA, FSJA;  
80x65 FSGA, FSHA;  
100x80 FSGA; 125x100 FSLA;  
150x100 FSKA, FSNA;  
150x125 FSKA, FSLA;  
200x150 FSJA, FSLA, FSNA;  
250x200 FSLA, FSNA

### Without Lantern Ring

80x65 FSJA, FSKA;  
100x65 FSKA;  
100x80 FSHA, FSJA, FSGCA, FSHCA;  
125x100 FSJCA, FSKA;  
150x125 FSHA, FSJA;  
200x150 FSHA, FSKA;



119	Gland Packing	Non-Asbestos	4 or 5
091	Gland	Bronze	1
085	Lantern Ring		
No.	Part Name	Material	Qty

119	Gland Packing	Non-Asbestos	4 or 5
091	Gland	Bronze	1
No.	Part Name	Material	Qty

207	Plug	Steel	1
111	Gland Packing	Non-Asbestos	4 or 5
107-2	Casing Ring	Bronze	1
107-1	Casing Ring		
095	Stay	Steel	1
056	Ball Bearing	-	2
053	Bearing Cover	Cast Iron	1
051	Bearing Housing		
048	Impeller Nut	Brass	
031	Shaft	Stainless Steel	
021	Impeller	Bronze	
011	Casing Cover	Cast Iron	
001	Casing		
No.	Part Name	Material	Qty