

Technical data

Pump name 200x150 FS4JA 5 37

| | | |
|----------|--------------------|-----------|
| Customer | Date 01-April-2020 | Company |
| Contact | Item no. | Issued by |
| Phone | Project | Phone |
| E-mail | Project ID | E-mail |

Requested data

| | | | | |
|---|---------------------------|-------------------------|--------------------|----------------------|
| 1 | Pump type | End Suction Volute Pump | Fluid | Water, clean |
| 2 | Number of pumps / Reserve | 1 / 0 | Liquid temperature | °C 20 |
| 3 | Flow | m ³ /h 0 | Kin. viscosity | mm ² /s 1 |
| 4 | Head | m 0 | Vapour pressure | bar 0.022 |
| 5 | Geodetic head | m 0 | PH value | 7 |
| 6 | Inlet pressure (pin) | bar 0.1 | Density | kg/dm ³ 1 |
| 7 | Available system NPSH | 0 | Solids | Weight % 0 |
| 8 | Ambient temperature | °C 20 | | |

Pump

| | | | | |
|----|---------------------------|-----------------------------------|-----------------------------------|-----------------------------|
| 9 | Pump name | 200x150 FS4JA 5 37 | Frequency | Hz 50 |
| 10 | Design | End Suction Volute Pump | Installation type | with base, motor |
| 11 | Manufacturer | PTEI | Impeller Diameter | Max. mm 274 |
| 12 | Speed | 1/min 1450 | | Designed mm 274 |
| 13 | No. of Stage | 1 | | Min. mm 222 |
| 14 | Connection Suction side | JIS 10K | Flow | Operating m ³ /h |
| 15 | Connection Discharge side | JIS 10K | | Max- m ³ /h 630 |
| 16 | Max Working Pressure | bar 10 | | Min- m ³ /h 180 |
| 17 | Shut-off head | bar 2.41 | Head | Operating m |
| 18 | Total weight | kg See the table of "Dimensions". | | - (Qmax.) m 14.1 |
| 19 | Shaft power | kW | | - (Qmin.) m 25.0 |
| 20 | | | Max. Shaft Power at max. impeller | kW 33.66 |
| 21 | Required pump NPSH | m | Efficiency | % |

Materials

| | | | | |
|----|-----------------|---------------------|-----------------|---------|
| 22 | Casing | Cast iron | M.S.mating ring | Ceramic |
| 23 | Impeller | Bronze | M.S.seal ring | Carbon |
| 24 | Shaft | 403 Stainless steel | | |
| 25 | Casing ring | Bronze | | |
| 26 | Ball bearing | . | | |
| 27 | Mechanical seal | . | | |

Motor

| | | | | |
|----|----------------------|-----------------------------|------------------|--------|
| 28 | Manufacturer | TECO | Insulation class | F |
| 29 | Type | 225SC_B3_37_3_400 | Phases | 3~ |
| 30 | Specific design | TEFC / 50 Hz / Pole pairs 2 | Frame size | 225 SC |
| 31 | Rated power | kW 37 | Weight | kg 327 |
| 32 | Number of poles | 4 | Electric voltage | V 400 |
| 33 | Speed | 1/min 1475 | Electric current | A 68.6 |
| 34 | Degree of protection | IP 55 | | |
| 35 | | | | |

Remarks

Performance curve Pump name 200x150 FS4JA 5 37

| | | |
|----------|--------------------|-----------|
| Customer | Date 01-April-2020 | Company |
| Contact | Item no. | Issued by |
| Phone | Project | Phone |
| E-mail | Project ID | E-mail |

Requested data

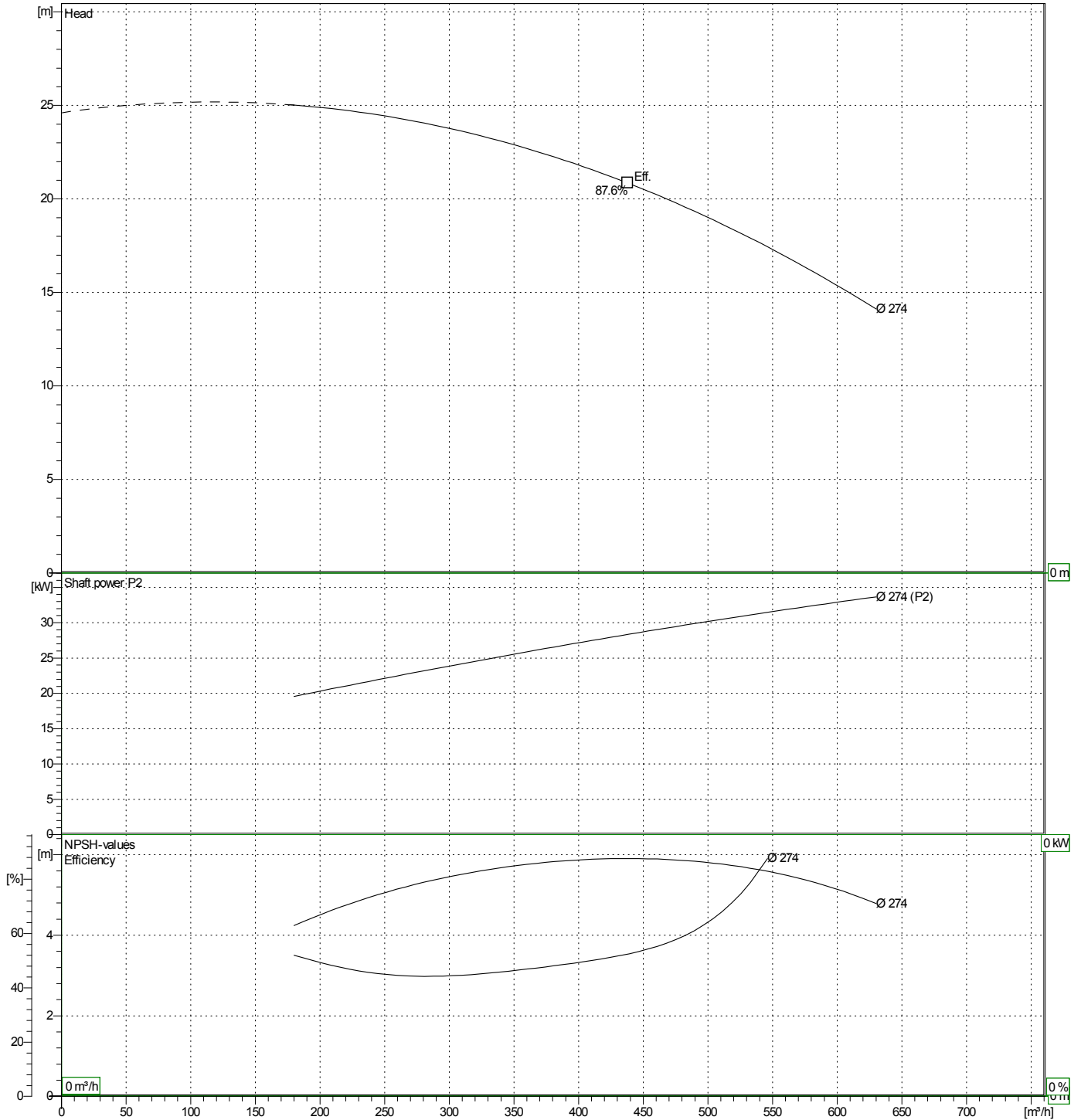
| | | | |
|---|---------------|-------------------|---|
| 1 | Flow | m ³ /h | 0 |
| 2 | Head | m | 0 |
| 3 | Geodetic head | m | 0 |

Pump

| | | | | |
|-------------------|-------------------|-----------------|-------|-------|
| Operating Flow | m ³ /h | Frequency | Hz | 50 |
| Operating Head | m | Number of poles | 4 | |
| Impeller Diameter | Designed mm | 274 | Speed | 1/min |

Test standard: ISO 9906:2012 - Grade3B

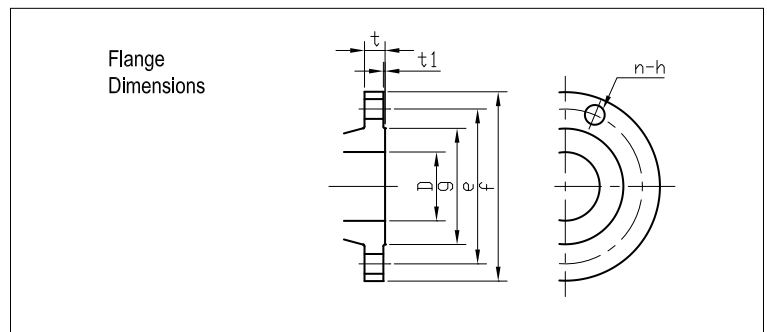
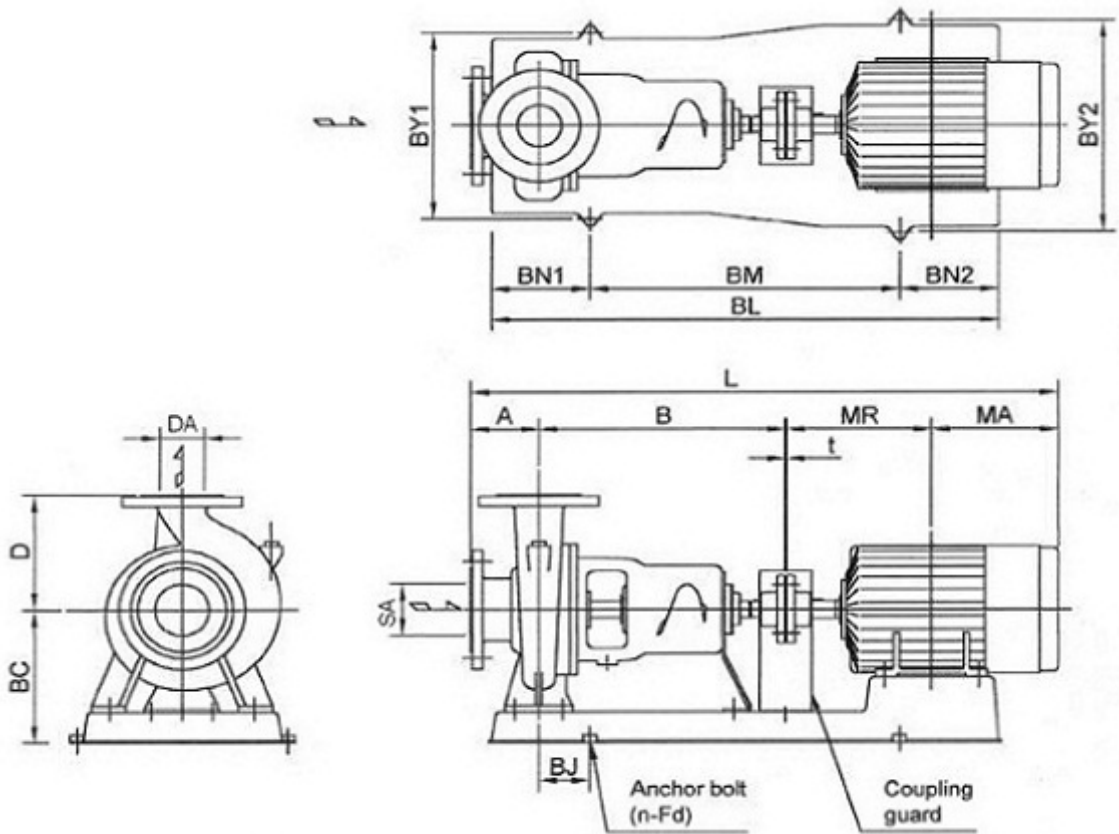
Water, clean [100%] ; 20°C; 0.9983kg/dm³; 1.005mm²/s



Dimensions

Pump name 200x150 FS4JA 5 37

| | | |
|----------|--------------------|-----------|
| Customer | Date 01-April-2020 | Company |
| Contact | Item no. | Issued by |
| Phone | Project | Phone |
| E-mail | Project ID | E-mail |



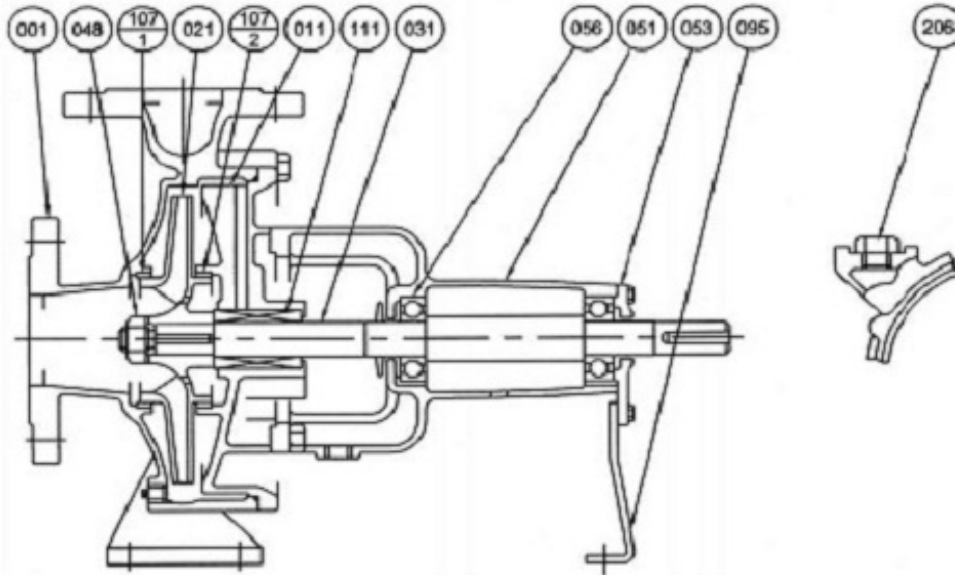
Total weight : 664 kg

| Pump dimensions | | | | mm | | Suction side | | mm | | Discharge side | | mm | |
|-----------------|------|----|---------|-------|-----|--------------|-----|----|--|----------------|--|----|--|
| A | 160 | L | 1510 | D | 200 | D | 150 | | | | | | |
| B | 530 | MA | 384 | e | 290 | e | 240 | | | | | | |
| BC | 385 | MR | 432 | f | 330 | f | 280 | | | | | | |
| BJ | 110 | n | 4 (Num) | g | 262 | g | 212 | | | | | | |
| BL | 1425 | SA | 200 | h | 23 | h | 23 | | | | | | |
| BM | 960 | t | 4 | n Num | 12 | n Num | 8 | | | | | | |
| BN1 | 230 | | | t | 26 | t | 26 | | | | | | |
| BN2 | 235 | | | t1 | 2 | t1 | 2 | | | | | | |
| BY1 | 670 | | | | | | | | | | | | |
| BY2 | 600 | | | | | | | | | | | | |
| D | 375 | | | | | | | | | | | | |
| DA | 150 | | | | | | | | | | | | |
| Fd | M20 | | | | | | | | | | | | |

(1/2) Construction

Pump name 200x150 FS4JA 5 37

| | | |
|----------|--------------------|-----------|
| Customer | Date 01-April-2020 | Company |
| Contact | Item no. | Issued by |
| Phone | Project | Phone |
| E-mail | Project ID | E-mail |

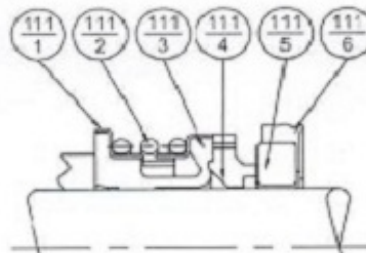
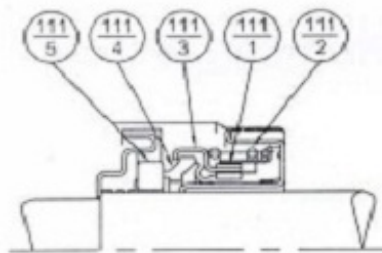


Model FH

50x40 FSHA; 65x50 FSHA, FSJA;
80x65 FSGA, FSHA, FSJA, FSKA;
100x80 FSGA, FSHA, FSJA;
125x100 FSKA

Model EA

100x65 FSKA; 100x80 FSGCA, FSHCA;
125x100 FSJCA, FSLA;
150x100 FSKA, FSNA;
150x125 FSHA, FSJA, FSKA, FSLA;
200x150 FSHA, FSJA, FSKA, FSLA, FSNA;
250x200 FSLA, FSNA



| 111-5 | Mating Ring | Ceramic | 1 |
|-------|---------------|-----------------|-----|
| 111-4 | Seal Ring | Carbon | |
| 111-3 | Friction Ring | NBR | |
| 111-2 | Coil Spring | Stainless Steel | |
| 111-1 | Spring Holder | Stainless Steel | |
| No. | Part Name | Material | Qty |

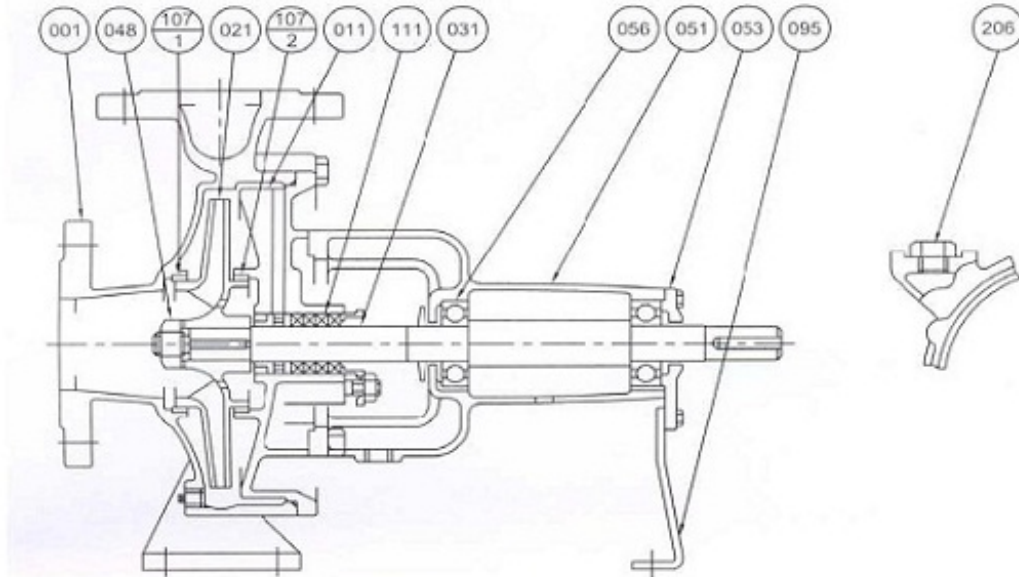
| 111-6 | Cup Gasket | NBR | 1 |
|-------|---------------|-----------------|-----|
| 111-5 | Mating Ring | Ceramic | |
| 111-4 | Seal Ring | Carbon | |
| 111-3 | Bellows | NBR | |
| 111-2 | Spring | Stainless Steel | |
| 111-1 | Spring Holder | Stainless Steel | |
| No. | Part Name | Material | Qty |

| 207 | Plug | Steel | 1 |
|-------|-----------------|-----------------|-----|
| 111 | Mechanical Seal | - | |
| 107-2 | Casing Ring | Bronze | |
| 107-1 | Casing Ring | Bronze | 1 |
| 095 | Stay | Steel | |
| 056 | Ball Bearing | - | 2 |
| 053 | Bearing Cover | Cast Iron | 1 |
| 051 | Bearing Housing | | |
| 048 | Impeller Nut | Brass | 1 |
| 031 | Shaft | Stainless Steel | |
| 021 | Impeller | Bronze | |
| 011 | Casing Cover | Cast Iron | |
| 001 | Casing | | |
| No. | Part Name | Material | Qty |

(2/2) Construction

Pump name 200x150 FS4JA 5 37

| | | |
|----------|--------------------|-----------|
| Customer | Date 01-April-2020 | Company |
| Contact | Item no. | Issued by |
| Phone | Project | Phone |
| E-mail | Project ID | E-mail |

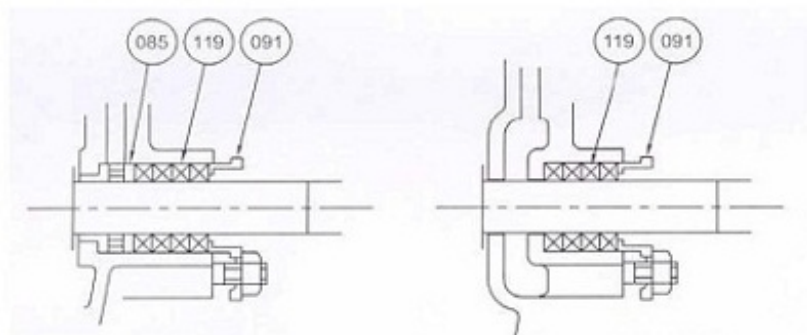


With Lantern Ring

50x40 FSHA; 65x50 FSHA, FSJA;
80x65 FSGA, FSHA;
100x80 FSGA; 125x100 FSLA;
150x100 FSKA, FSNA;
150x125 FSKA, FSLA;
200x150 FSJA, FSLA, FSNA;
250x200 FSLA, FSNA

Without Lantern Ring

80x65 FSJA, FSKA;
100x65 FSKA;
100x80 FSHA, FSJA, FSGCA, FSHCA;
125x100 FSJCA, FSKA;
150x125 FSHA, FSJA;
200x150 FSHA, FSKA;



| 119 | Gland Packing | Non-Asbestos | 4 or 5 |
|-----|---------------|--------------|--------|
| 091 | Gland | Bronze | 1 |
| 085 | Lantern Ring | | |
| No. | Part Name | Material | Qty |

| 119 | Gland Packing | Non-Asbestos | 4 or 5 |
|-----|---------------|--------------|--------|
| 091 | Gland | Bronze | 1 |
| No. | Part Name | Material | Qty |

| 207 | Plug | Steel | 1 |
|-------|-----------------|-----------------|--------|
| 111 | Gland Packing | Non-Asbestos | 4 or 5 |
| 107-2 | Casing Ring | Bronze | 1 |
| 107-1 | Casing Ring | | |
| 095 | Stay | Steel | 1 |
| 056 | Ball Bearing | - | 2 |
| 053 | Bearing Cover | Cast Iron | 1 |
| 051 | Bearing Housing | | |
| 048 | Impeller Nut | Brass | |
| 031 | Shaft | Stainless Steel | |
| 021 | Impeller | Bronze | |
| 011 | Casing Cover | Cast Iron | |
| 001 | Casing | | |
| No. | Part Name | Material | Qty |