

# Technical data

Pump name

100x80 CS2HA 5 45

Customer	Date	2021-09-14	Company
Contact	Item no.		Issued by
Phone	Project		Phone
E-mail	Project ID		E-mail

## Requested data

1	Pump type	Horizontal Split Casing	Fluid	Water
2	Number of pumps / Reserve	1 / 0	Liquid temperature	°C 20
3	Flow	m³/h	Kin. viscosity	mm²/s 1.005
4	Head	m	Vapour pressure	bar 0.0234
5	Geodetic head	m	PH value	
6	Inlet pressure (pin)	bar 0	Density	kg/m³ 998.3
7	Available system NPSH		Solids	Weight % 0
8	Ambient temperature	°C 20		

## Pump

9	Pump name	100x80 CS2HA 5 45	Frequency	Hz 50
10	Design	Horizontal Split Casing	Installation type	with base, motor
11	Manufacturer	EBARA	Impeller Diameter	Max. mm 266
12	Speed	1/min 2900		Designed mm 266
13	No. of Stage	1		Min. mm 214
14	Connection	Suction side JIS 16K	Flow	Operating m³/h
15	Connection	Discharge side JIS 16K		Max- m³/h 167
16	Max Working Pressure	bar 16		Min- m³/h 0
17	Shut-off head	bar 9.99	Head	Operating m
18	Total weight	kg See the table of "Dimensions".		- (Qmax.) m 68.6
19	Shaft power	kW		- (Qmin.) m 102.1
20			Max. Shaft Power at max. impeller	kW 47.30
21	Required pump NPSH	m	Efficiency	%

## Materials

22	Casing	Cast iron	
23	Impeller	Bronze	
24	Shaft	316 Stainless steel	
25	Shaft sleeve	.	
26	Mechanical seal	.	
27	Ball bearing	.	

## Motor

28	Manufacturer	TECO	Insulation class	F
29	Type	225MA_B3_45_3_400	Phases	3~
30	Specific design	TEFC / 50 Hz / Pole pairs 1	Frame size	225 MA
31	Rated power	kW 45	Weight	kg 343
32	Number of poles	2	Electric voltage	V 400
33	Speed	1/min 2945	Electric current	A 76.9
34	Degree of protection	IP 55		
35				

## Remarks

# Performance curve

Pump name

100x80 CS2HA 5 45

Customer	Date	2021-09-14	Company
Contact	Item no.		Issued by
Phone	Project		Phone
E-mail	Project ID		E-mail

## Requested data

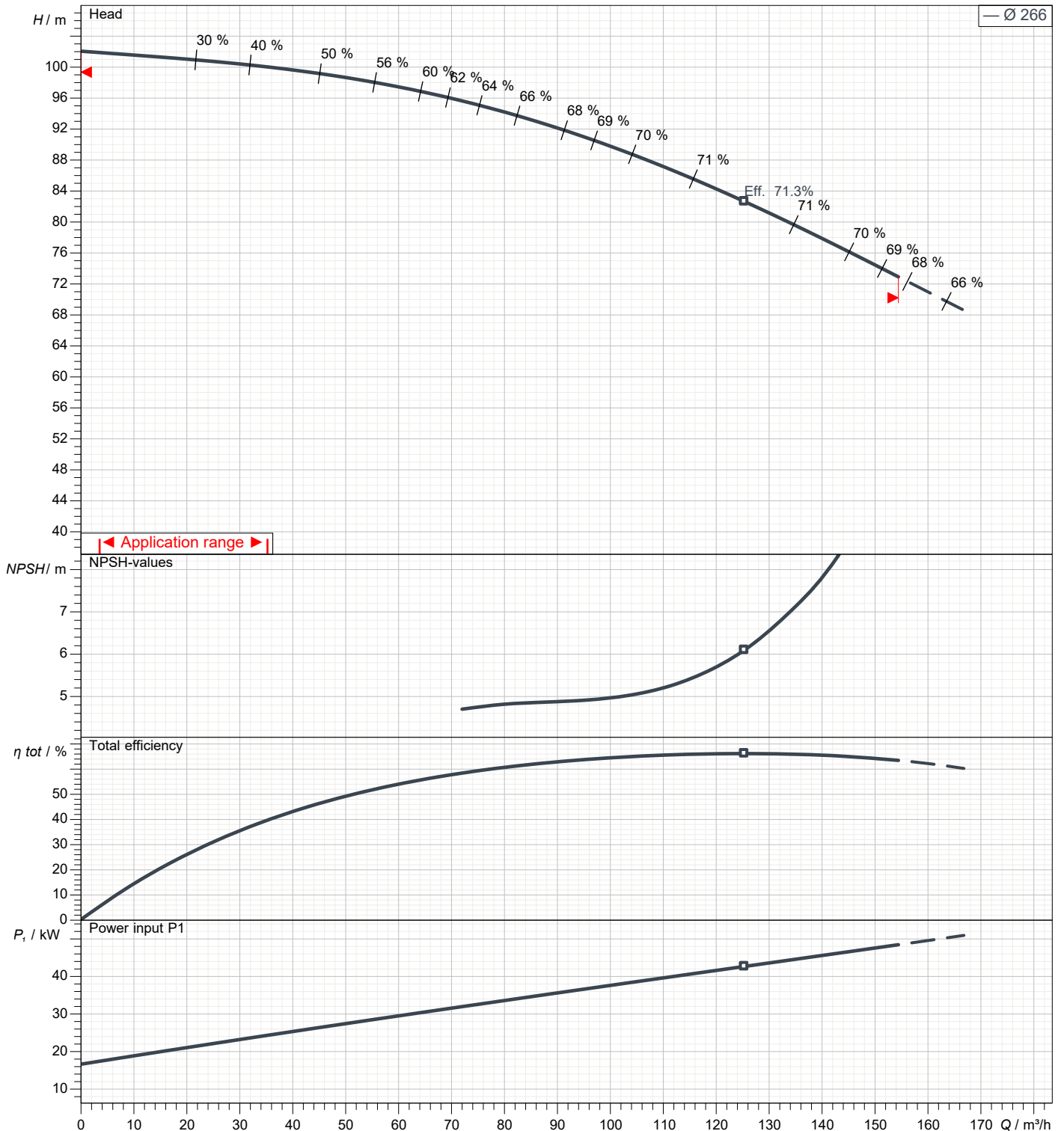
1	Flow	m <sup>3</sup> /h	
2	Head	m	
3	Geodetic head	m	

## Pump

Operating Flow	m <sup>3</sup> /h		Frequency	Hz	50
Operating Head	m		Number of poles		2
Impeller Diameter Designed	mm	266	Speed	1/min	2900

Test standard: ISO 9906:2012 - Grade3B

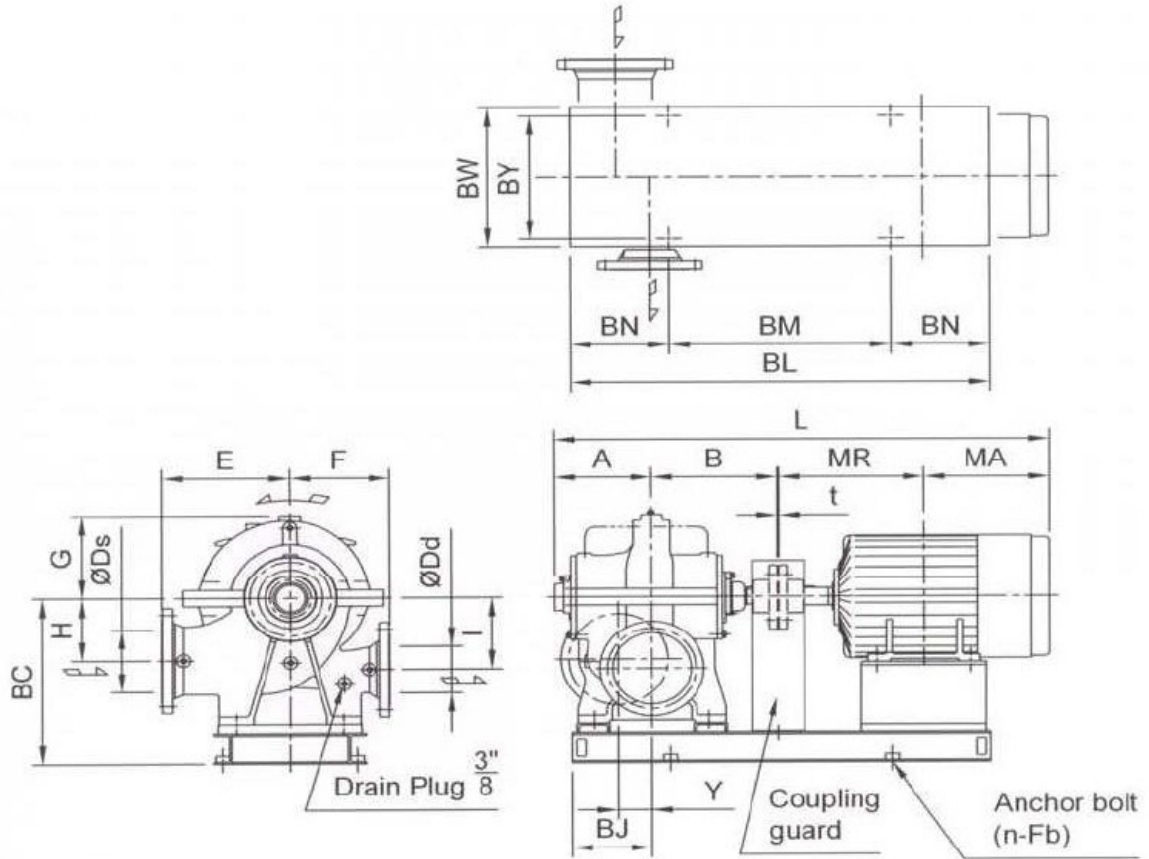
Water; 20°C; 998.3kg/m<sup>3</sup>; 1.005mm<sup>2</sup>/s



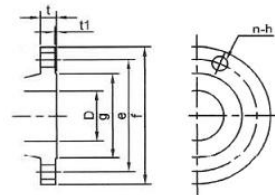
# Dimensions

Pump name 100x80 CS2HA 5 45

Customer	Date 2021-09-14	Company
Contact	Item no.	Issued by
Phone	Project	Phone
E-mail	Project ID	E-mail



**Flange Dimension - Flange (JIS 16K RF)**



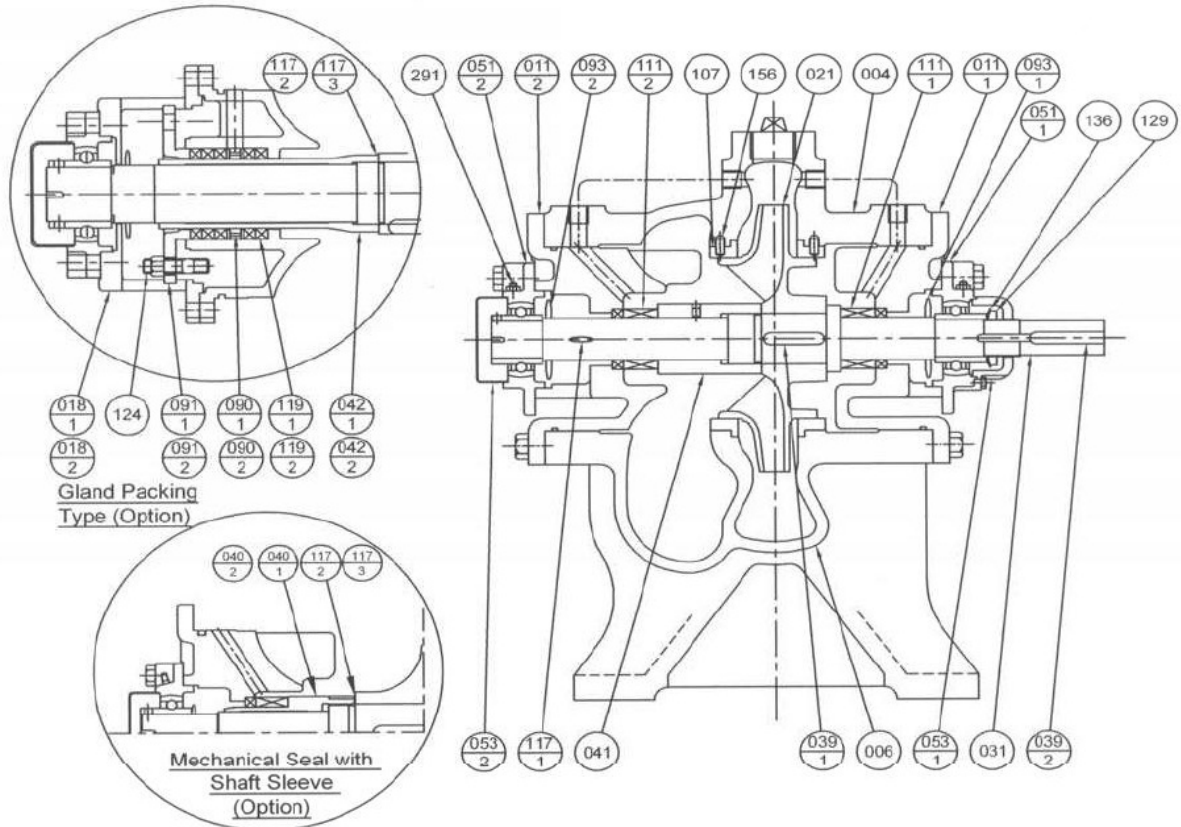
Total weight : 629 kg

Pump dimensions				mm		Suction side		mm		Discharge side		mm	
A	221	H	150	D	100	D	80						
B	250	I	160	e	185	e	160						
BC	470	L	1286	f	225	f	200						
BJ	185	MA	396.5	g	160	g	135						
BL	1110	MR	414.5	h	23	h	23						
BM	680	n	4 (Num)	n Num	8 (Num)	n Num	8 (Num)						
BN	215	t	4	t	26	t	24						
BW	520	Y	70	t1	2	t1	2						
BY	460												
Dd	80												
Ds	100												
E	280												
F	220												
Fb	M22												
G	185												

# Construction

Pump name 100x80 CS2HA 5 45

Customer	Date 2021-09-14	Company
Contact	Item no.	Issued by
Phone	Project	Phone
E-mail	Project ID	E-mail



### Gland Packing Type (Option)

042-2	Shaft Sleeve (CCP Side)	BC6	1	119-2	Shaft Sleeve (CCP Side)	Carbonised Fiber	5
042-1	Shaft Sleeve (CP Side)			119-2	Shaft Sleeve (CP Side)	Carbonised Fiber	5
018-2	Bearing Support (CCP Side)	FC200	1	090-2	Lantern Ring (CCP Side)	BC6	1
018-1	Bearing Support (CP Side)			090-1	Lantern Ring (CP Side)		
124	Gland Bolt			091-2	Gland (CCP Side)		
		C3604BD-F	4	091-1	Gland (CP Side)		

### Mechanical Seal with Shaft Sleeve Type (Option)

040-2	Shaft Sleeve (CCP Side)	BC6	1	117-3	Sleeve Gasket (CCP Side)	V#6500	1
040-1	Shaft Sleeve (CP Side)	BC6		117-2	Sleeve Gasket (CP Side)	V#6500	

### Mechanical Seal Type (Standard)

051-2	Bearing Unit	FC200	1	291	Grease Nipple	C3604BD-F	2
051-1	Bearing Unit			156	Lock Pin	SUS304	
041	Impeller Nut	BC6	1	136	Bearing Washer	SS400	1
039-2	Coupling Key	S50C		129	Bearing Nut		
039-1	Impeller Key	316 Stainless Steel		117-1	Gasket (Casing)	V#6500	
031	Shaft	Steel		111-2	Mechanical Seal	-	
021	Impeller	BC6		111-1	Mechanical Seal	-	
011-2	Side Cover	FC250		107	Casing Wear Ring	BC6	2
011-1	Side Cover			093-2	Deflector (CCP Side)	Rubber	1
006	Casing Lower Half			093-1	Deflector (CP Side)		
004	Casing Upper Half			053-2	Bearing Cover	FC200	
				053-1	Bearing Cover		
No.	Part Name	Material	Qty	No.	Part Name	Material	Qty