

# TP8-P Series Automatic Booster Pump



**Power:** 0.18 - 0.37 kW

**50Hz**

**Head:** Up to 30 M

**Flow:** Up to 35 L/min

**60Hz**

**Head:** Up to 38 M

**Flow:** Up to 42 L/min

**Outlet:** 3/4" - 1"

## Applications

Ideal for pumping clean, non-volatile liquids without fibres or solids in such applications as :

1. Homes where the incoming city water supply pressure is too low
2. Portable water supply or underground
3. Irrigation
4. Washing/cleaning system

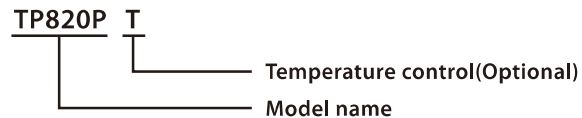
## Operating Conditions

1. Ambient temperature: Max. +40°C
2. Liquid temperature: +4°C ~ +40°C
3. Suction head: Max. 8 m
4. Inlet pressure: Lower than the pressure switch OFF setting. ( See Specification )

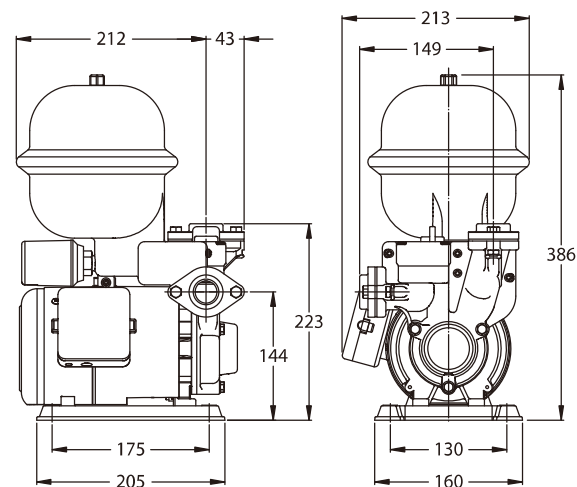
## Product Features

1. Manufactured with non-corrosive rust proof materials.
2. Special design corrosive resistant pressure tank with good appearance.
3. Appropriate reliable check valve with silent operation.
4. Compact design, small size, easy installation.
5. Every pumps tested in our factory to ensure quality and reliability.
6. High performance, electricity saving motor with patented cooling construction. Build-in thermal overload protector for motor burnt out protection.

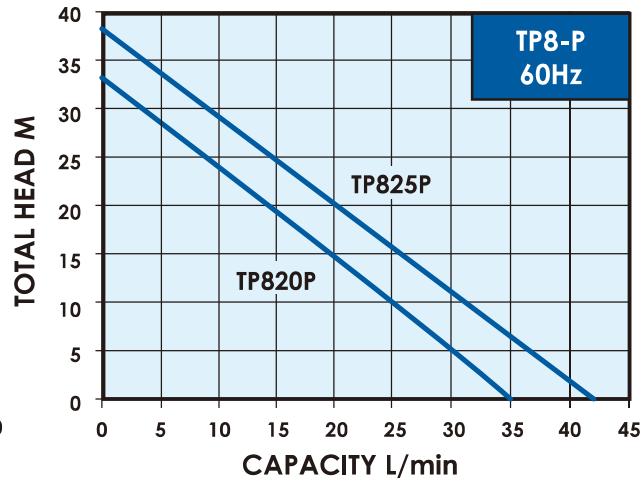
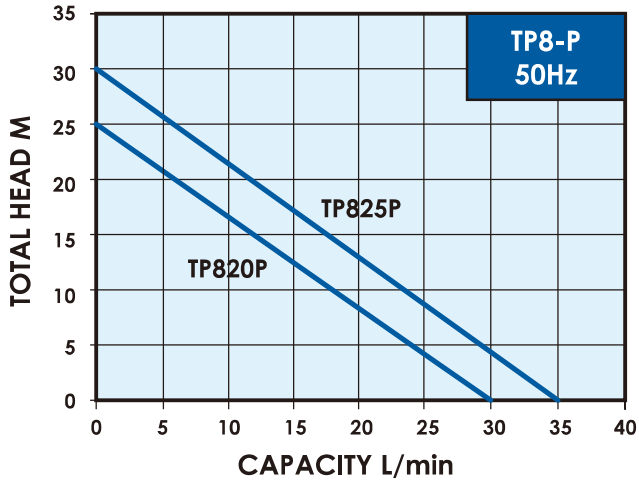
## Model code




## Dimensions




## Performance curve



## Specification, 50Hz

Model	Power (kW)	Cycle (Hz)	Phase (Ø)	Voltage (V)	Amp's (A)	Pressure Switch kg/cm <sup>2</sup>		Inlet (in.)	Outlet (in.)	H max. (m)	Q max. (L/min)	N.W. (kg)	
						ON	OFF						
TP820P(T)	0.18	50	1	200-240	1.4	0.9	1.8	¾"	¾"	25	30	6.7	32
TP825P(T)	0.37	50	1	200-240	2.7	1.8	2.8	1"	1"	30	35	7.6	32

## Specification, 60Hz

Model	Power (kW)	Cycle (Hz)	Phase (Ø)	Voltage (V)	Amp's (A)	Pressure Switch kg/cm <sup>2</sup>		Inlet (in.)	Outlet (in.)	H max. (m)	Q max. (L/min)	N.W. (kg)	
						ON	OFF						
TP820P(T)	0.18	60	1	110/220	3.2/1.6	1.2	2.4	¾"	¾"	34	35	6.7	32
TP825P(T)	0.37	60	1	110/220	5.2/2.6	2.0	3.0	1"	1"	38	42	7.6	32