

# Technical data

Pump name

200x150 FS4NA 5 132

Customer	Date 16-December-2020	Company
Contact	Item no.	Issued by
Phone	Project	Phone
E-mail	Project ID	E-mail

## Requested data

1	Pump type	End Suction Volute Pump	Fluid	Water, clean
2	Number of pumps / Reserve	1 / 0	Liquid temperature °C	20
3	Flow l/s	103	Kin. viscosity mm <sup>2</sup> /s	1
4	Head m	75	Vapour pressure bar	0.022
5	Geodetic head m	0	PH value	7
6	Inlet pressure (pin) bar	0	Density kg/dm <sup>3</sup>	1
7	Available system NPSH	0	Solids Weight %	0
8	Ambient temperature °C	20		

## Pump

9	Pump name	200x150 FS4NA 5 132	Frequency Hz	50
10	Design	End Suction Volute Pump	Installation type	with base, motor
11	Manufacturer	PTEI	Impeller Diameter	Max. mm 511
12	Speed 1/min	1450		Designed mm 481
13	No. of Stage	1		Min. mm 409
14	Connection Suction side	JIS 16K	Flow	Operating l/s 103
15	Connection Discharge side	JIS 16K		Max- l/s 189
16	Max Working Pressure bar	16		Min- l/s 50
17	Shut-off head bar	7.27	Head	Operating m 75.0
18	Total weight kg	See the table of "Dimensions".		- (Qmax.) m 46.8
19	Shaft power kW	93.10		- (Qmin.) m 79.2
20			Max. Shaft Power at max. impeller kW	157.22
21	Required pump NPSH m	2.5	Efficiency %	80.0

## Materials

22	Casing	Cast iron	M.S.mating ring	Ceramic
23	Impeller	Bronze	M.S.seal ring	Carbon
24	Shaft	403 Stainless steel		
25	Casing ring	Bronze		
26	Ball bearing	.		
27	Mechanical seal	.		

## Motor

28	Manufacturer	TECO	Insulation class	F
29	Type	315SC_B3_132_3_400	Phases	3~
30	Specific design	TEFC / 50 Hz / Pole pairs 2	Frame size	315 SC
31	Rated power kW	132	Weight kg	920
32	Number of poles	4	Electric voltage V	400
33	Speed 1/min	1480	Electric current A	231
34	Degree of protection	IP 55		
35				

## Remarks

# Performance curve Pump name 200x150 FS4NA 5 132

Customer	Date	16-December-2020	Company
Contact	Item no.		Issued by
Phone	Project		Phone
E-mail	Project ID		E-mail

### Requested data

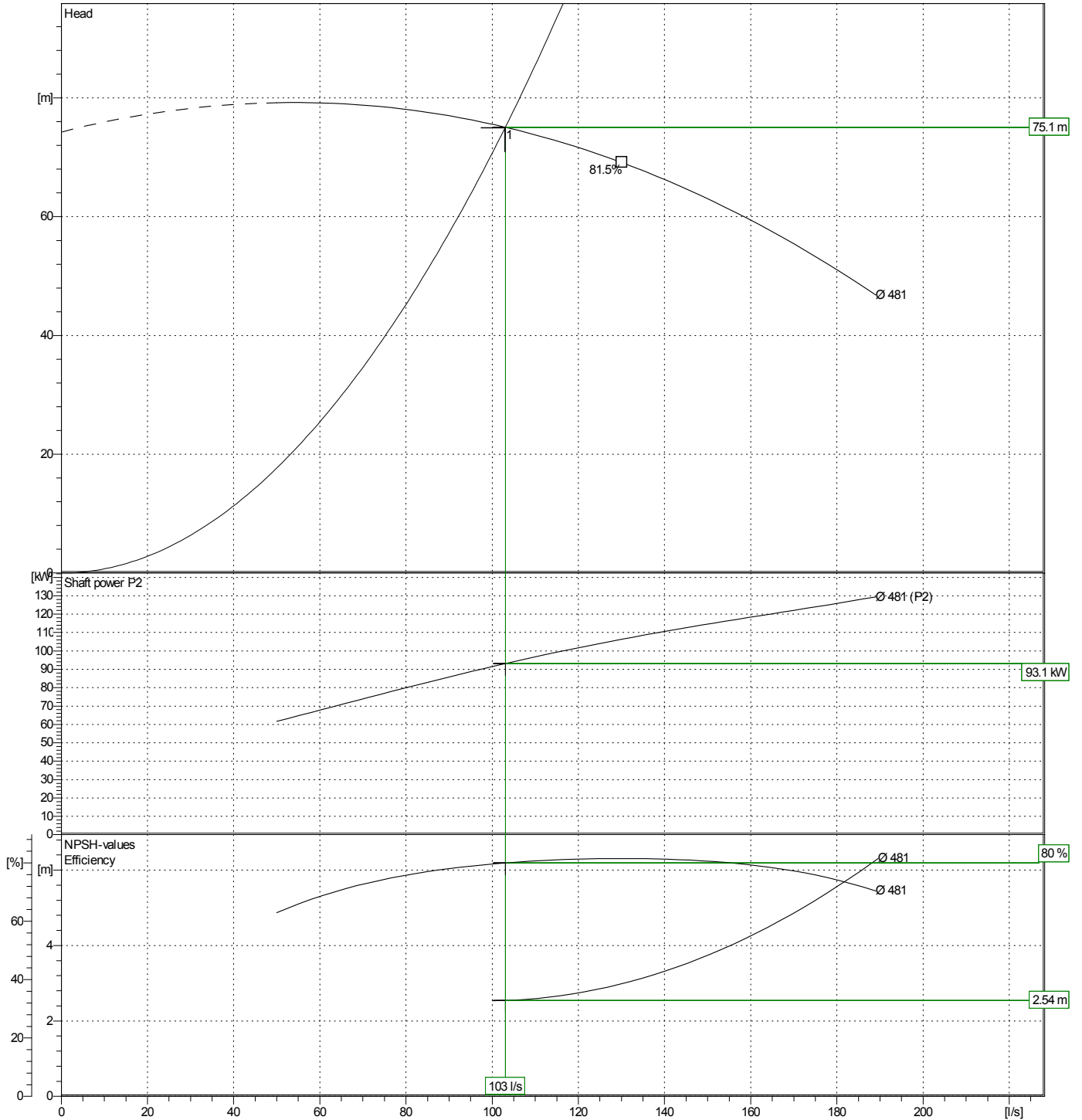
1	Flow	l/s	103
2	Head	m	75
3	Geodetic head	m	0

### Pump

Operating Flow	l/s	103	Frequency	Hz	50
Operating Head	m	75.0	Number of poles		4
Impeller Diameter	Designed mm	481	Speed	1/min	1450

Test standard: ISO 9906:2012 - Grade3B

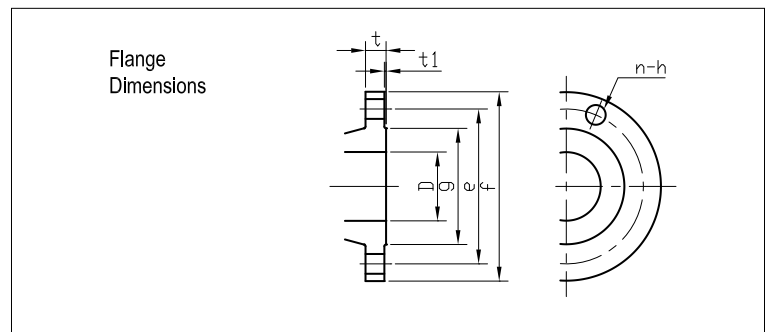
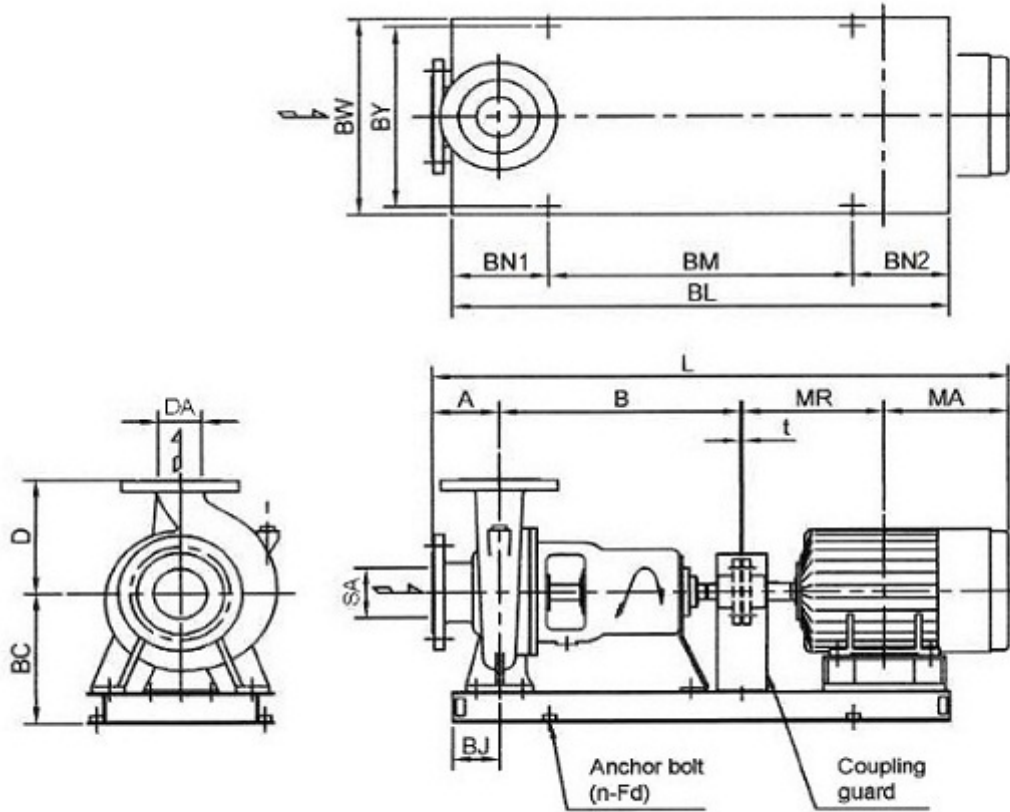
Water, clean [100%] ; 20°C; 0.9983kg/dm<sup>3</sup>; 1mm<sup>2</sup>/s



# Dimensions

Pump name 200x150 FS4NA 5 132

Customer	Date 16-December-2020	Company
Contact	Item no.	Issued by
Phone	Project	Phone
E-mail	Project ID	E-mail



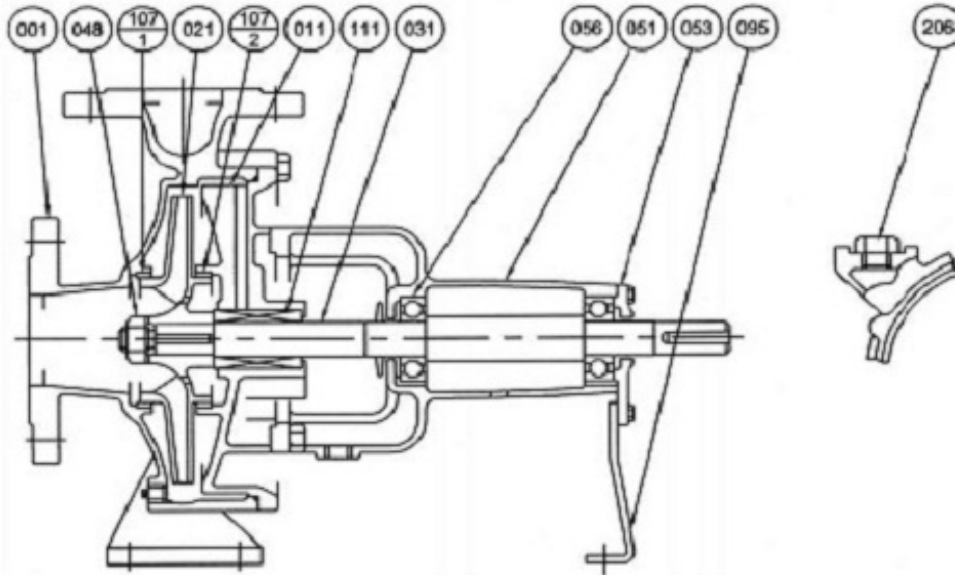
Total weight : 1608 kg

Pump dimensions				mm		Suction side		mm		Discharge side		mm	
A	184	L	1972	D	200	D	150	e	305	e	260	f	305
B	670	MA	527	f	350	f	305	g	275	g	230	h	25
BC	550	MR	589	h	25	h	25	n Num	12 (Num)	n Num	12 (Num)	t	28
BJ	130	n	6 (Num)	n Num	12 (Num)	t	28	t1	2	t1	2		
BL	1680	SA	200	t	30								
BM	2x665	t	4	t1	2								
BN1	175												
BN2	175												
BW	720												
BY	650												
D	562												
DA	150												
Fd	M22												

# (1/2) Construction

Pump name 200x150 FS4NA 5 132

Customer	Date 16-December-2020	Company
Contact	Item no.	Issued by
Phone	Project	Phone
E-mail	Project ID	E-mail

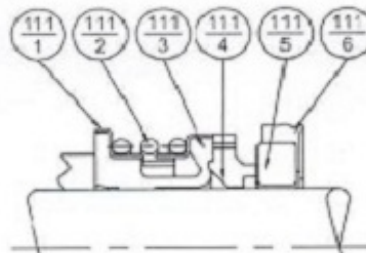
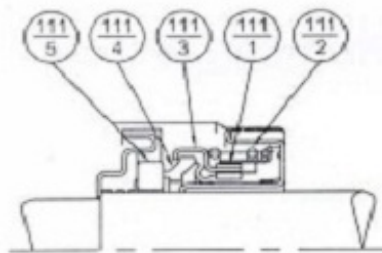


### Model FH

50x40 FSHA; 65x50 FSHA, FSJA;  
80x65 FSGA, FSHA, FSJA, FSKA;  
100x80 FSGA, FSHA, FSJA;  
125x100 FSKA

### Model EA

100x65 FSKA; 100x80 FSGCA, FSHCA;  
125x100 FSJCA, FSLA;  
150x100 FSKA, FSNA;  
150x125 FSHA, FSJA, FSKA, FSLA;  
200x150 FSHA, FSJA, FSKA, FSLA, FSNA;  
250x200 FSLA, FSNA



111-5	Mating Ring	Ceramic	1
111-4	Seal Ring	Carbon	
111-3	Friction Ring	NBR	
111-2	Coil Spring	Stainless Steel	
111-1	Spring Holder	Stainless Steel	
No.	Part Name	Material	Qty

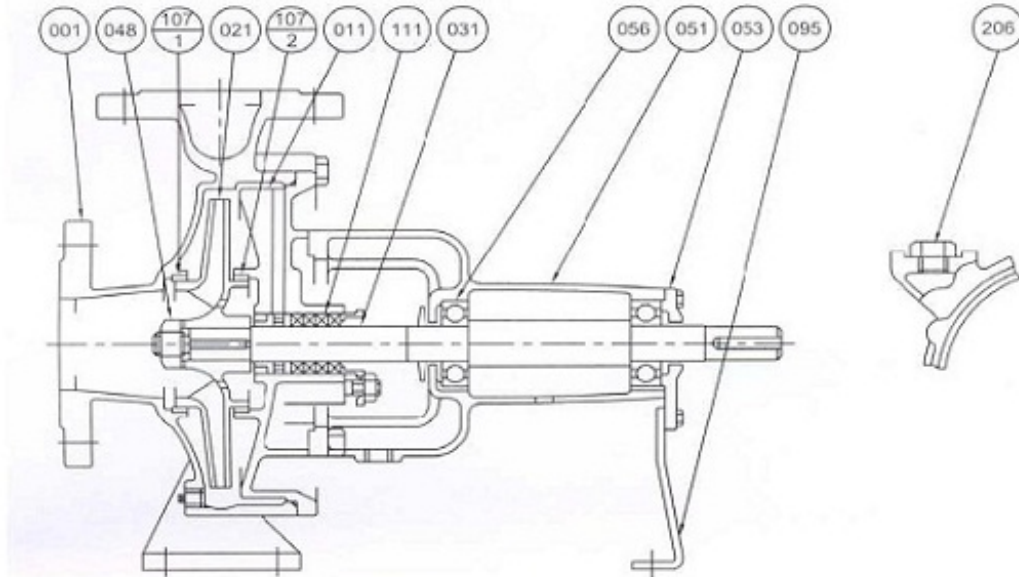
111-6	Cup Gasket	NBR	1
111-5	Mating Ring	Ceramic	
111-4	Seal Ring	Carbon	
111-3	Bellows	NBR	
111-2	Spring	Stainless Steel	
111-1	Spring Holder	Stainless Steel	
No.	Part Name	Material	Qty

207	Plug	Steel	1
111	Mechanical Seal	-	
107-2	Casing Ring	Bronze	
107-1	Casing Ring	Bronze	1
095	Stay	Steel	
056	Ball Bearing	-	2
053	Bearing Cover	Cast Iron	1
051	Bearing Housing		
048	Impeller Nut	Brass	1
031	Shaft	Stainless Steel	
021	Impeller	Bronze	
011	Casing Cover	Cast Iron	
001	Casing		
No.	Part Name	Material	Qty

# (2/2) Construction

Pump name 200x150 FS4NA 5 132

Customer	Date 16-December-2020	Company
Contact	Item no.	Issued by
Phone	Project	Phone
E-mail	Project ID	E-mail

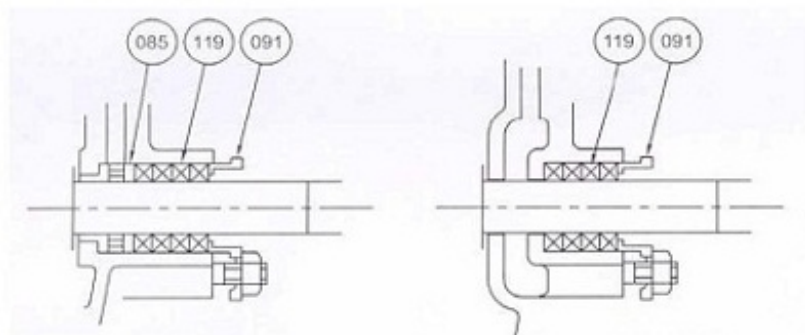


### With Lantern Ring

50x40 FSHA; 65x50 FSHA, FSJA;  
80x65 FSGA, FSHA;  
100x80 FSGA; 125x100 FSLA;  
150x100 FSKA, FSNA;  
150x125 FSKA, FSLA;  
200x150 FSJA, FSLA, FSNA;  
250x200 FSLA, FSNA

### Without Lantern Ring

80x65 FSJA, FSKA;  
100x65 FSKA;  
100x80 FSHA, FSJA, FSGCA, FSHCA;  
125x100 FSJCA, FSKA;  
150x125 FSHA, FSJA;  
200x150 FSHA, FSKA;



119	Gland Packing	Non-Asbestos	4 or 5
091	Gland	Bronze	1
085	Lantern Ring		
No.	Part Name	Material	Qty

119	Gland Packing	Non-Asbestos	4 or 5
091	Gland	Bronze	1
No.	Part Name	Material	Qty

207	Plug	Steel	1
111	Gland Packing	Non-Asbestos	4 or 5
107-2	Casing Ring	Bronze	1
107-1	Casing Ring		
095	Stay	Steel	1
056	Ball Bearing	-	2
053	Bearing Cover	Cast Iron	1
051	Bearing Housing		
048	Impeller Nut	Brass	
031	Shaft	Stainless Steel	
021	Impeller	Bronze	
011	Casing Cover	Cast Iron	
001	Casing		
No.	Part Name	Material	Qty