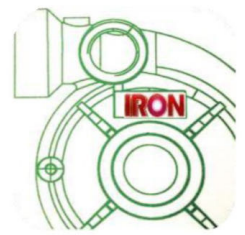




A PROFESSIONAL FIRE PUMPS COMPANY



IRON SERIES



TESU



THT

THUAN HIEP THANH CO.,LTD

<http://thuanhiepthanh.vn>

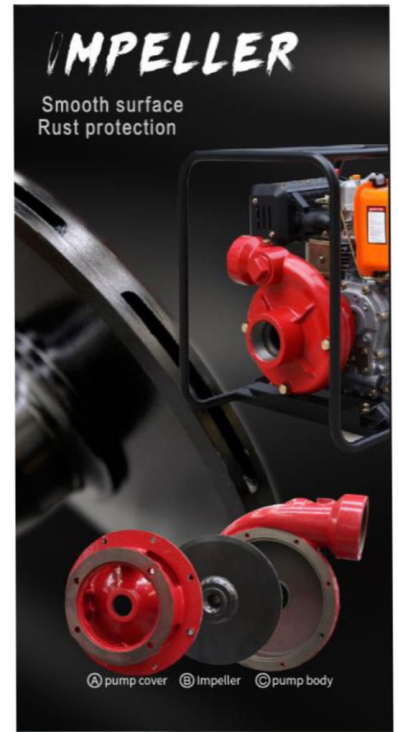
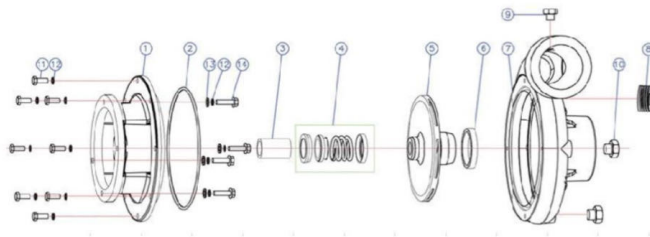
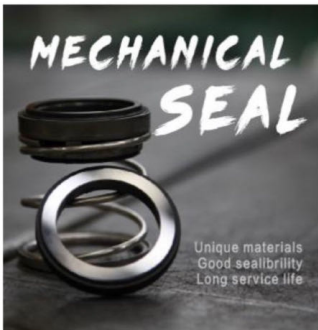
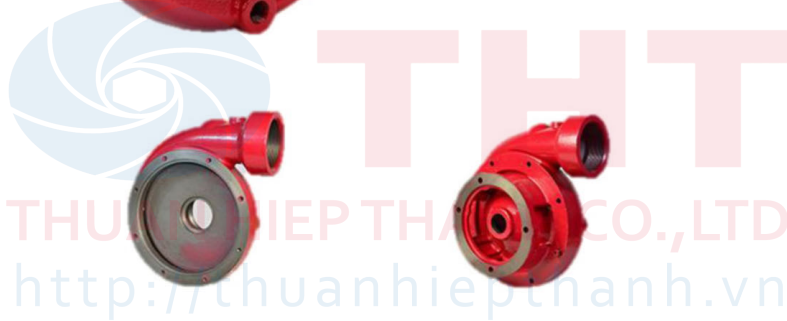


High Pressure Pump



TESU Fire Fighting Pump:

- Compact Design.
- High Head.
- High Durability.





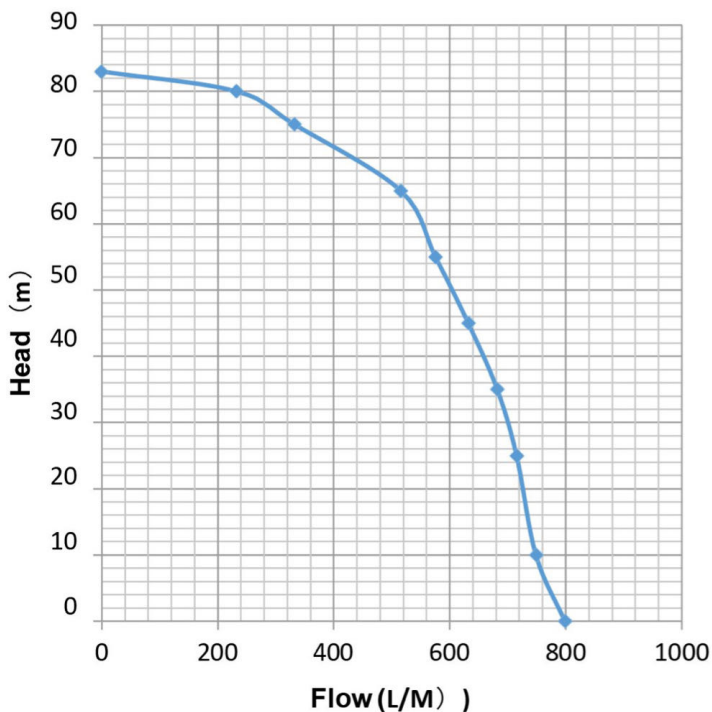
High Pressure Pump



FLOW	L/min	0	233.33	333.33	516.67	576.67	633.33	683.33	716.67	750.00	800.00
	m³/h	0	14	20	31	34.6	38	41	43	45	48
HEAD	m	83	80	75	65	55	45	35	25	10	0

<http://thuanhiepthanh.vn>

PERFORMANCE CURVE



Portable Fire Fighting Pump	Model: KDP40HSE
Engine Type	DIESEL 4 Stroke
Number of Cylinder	Single Cylinder
Power@Speed Max	20Hp@3600 Rpm
Fuel Capacity	3.5 L
Oil Capacity	1.1 L
Fuel Consumption	< 370 (g/kwh)
Starting method	Electric/Handle
Battery	9Ah
Pump Type	High pressure Centrifugal
Material	High quality Cast-iron
Head & Flow max	83 m - 48 m3/h
Inlet/Outlet	3 inch/ 3 inch
Weight	80 Kg
Dimension	580X490X630



High Pressure Pump



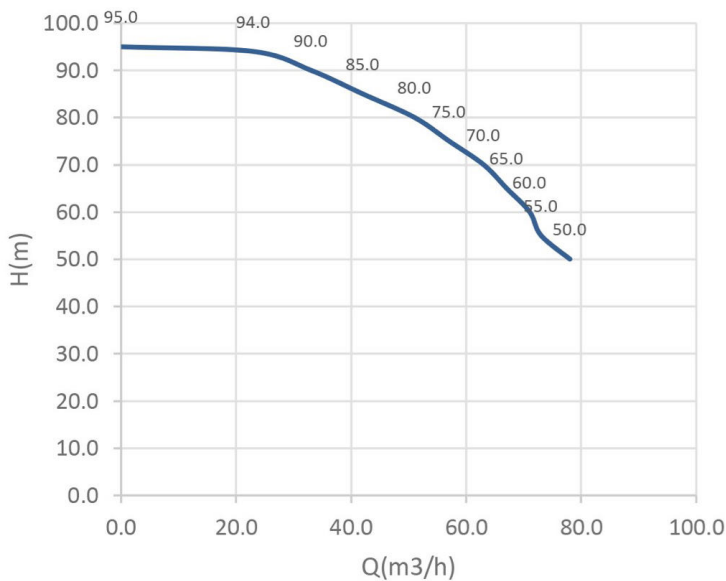
30HP



m ³ /h	0	23	33	42	51	57	63	67	71	73	78
m	95	94	90	85	80	75	70	65	60	55	50

PERFORMANCE CURVE

KDP92HV



Portable Fire Fighting Pump	Model: KDP92HV
Engine Type	DIESEL 4 Stroke
Number of Cylinder	TWO Cylinder
Power@Speed Max	30Hp@3600 Rpm
Fuel Capacity	45 L
Oil Capacity	3 L
Fuel Consumption	< 370 (g/kwh)
Starting method	Electric/Handle
Battery	36Ah
Pump Type	High pressure Centrifugal
Material	High quality Cast-iron
Head & Flow max	95 m - 75 m ³ /h
Inlet/Outlet	3 inch/ 3 inch
Weight	85 Kg
Dimension	970 X 840 X 895